



# International Journal of Innovative Research in Science Engineering and Technology (IJIRSET)

*(A Monthly, Peer Reviewed, Refereed, Scholarly Indexed, Open Access Journal)*



**Impact Factor: 8.699**

**Volume 15, Issue 1, January 2026**

# AI-Driven Data Integration for Mergers and Acquisitions: Automating Entity Resolution and System Consolidation

Mutha Ravi Tej Kotla

Integration/Solution Architect, USA

**ABSTRACT:** Mergers and acquisitions (M&A) are critical strategic initiatives that enable organizations to expand market presence, achieve operational synergies, and enhance competitive advantage. However, one of the most complex and time-consuming challenges in M&A execution is the integration of heterogeneous data systems across merging entities. Traditional data integration approaches often rely on manual processes, rule-based matching, and rigid transformation pipelines, which are insufficient to handle the scale, diversity, and ambiguity of modern enterprise data landscapes.

This article explores the role of Artificial Intelligence (AI) in transforming data integration during M&A, with a specific focus on automating entity resolution and system consolidation. AI-driven techniques such as machine learning-based record linkage, natural language processing (NLP), and graph-based data modeling enable organizations to accurately identify, match, and unify entities across disparate systems. These approaches significantly reduce data duplication, improve data quality, and accelerate integration timelines.

Furthermore, the paper examines architectural strategies for implementing AI-driven data integration, including the use of data lakes, integration platforms, and metadata-driven pipelines. It highlights how intelligent automation can streamline schema mapping, data transformation, and system harmonization across legacy and modern platforms. Real-world scenarios and conceptual models are discussed to demonstrate how enterprises can achieve scalable, resilient, and efficient integration outcomes.

The study concludes that AI-driven data integration is not merely an enhancement but a necessity for successful M&A execution in the digital era. Organizations that adopt intelligent integration frameworks can significantly reduce risk, lower operational costs, and unlock faster time-to-value from their mergers and acquisitions.

**KEYWORDS:** AI-Driven Data Integration, Mergers and Acquisitions (M&A), Entity Resolution, System Consolidation, Machine Learning, Data Matching and Deduplication, Data Integration Architecture, Schema Mapping Automation, Natural Language Processing (NLP), Graph Data Models, Data Lakes, Enterprise Data Management, Intelligent Automation, Digital Transformation

## I. INTRODUCTION

Mergers and acquisitions (M&A) have become a cornerstone of modern enterprise strategy, enabling organizations to accelerate growth, diversify capabilities, and gain competitive advantage in rapidly evolving markets. While financial and operational aspects of M&A receive significant attention, the success or failure of these initiatives often hinges on how effectively data and systems are integrated across the merged entities. In today's digital economy, where data is a critical asset, seamless integration is no longer optional—it is fundamental to realizing the full value of an acquisition. However, M&A-driven data integration presents substantial challenges. Organizations typically operate on heterogeneous technology stacks, including legacy systems, modern cloud platforms, and third-party applications. These systems store data in varying formats, schemas, and standards, leading to inconsistencies, duplication, and semantic conflicts. One of the most critical issues is entity resolution—the process of identifying and matching records that refer to the same real-world entity (such as customers, vendors, or products) across multiple systems. Traditional approaches to entity resolution rely heavily on deterministic rules and manual intervention, which are often error-prone, time-consuming, and difficult to scale.

In addition to entity resolution, system consolidation poses another layer of complexity. Organizations must decide how to merge or rationalize multiple applications, databases, and workflows into a unified ecosystem. This involves schema alignment, data transformation, and migration, all while ensuring data integrity, regulatory compliance, and minimal disruption to business operations. Conventional Extract, Transform, Load (ETL) processes and rule-based integration frameworks struggle to adapt to the dynamic and uncertain nature of M&A environments, where data ambiguity and evolving requirements are the norm.

The emergence of Artificial Intelligence (AI) has introduced a paradigm shift in how data integration challenges are addressed. AI-driven techniques, including machine learning, natural language processing (NLP), and graph analytics, enable more intelligent, adaptive, and automated approaches to data integration. For instance, machine learning models can learn patterns from historical data to improve record matching accuracy, while NLP techniques can interpret unstructured or semi-structured data for better schema alignment. Graph-based approaches further enhance entity resolution by capturing complex relationships between data points, enabling more context-aware matching.

AI-driven data integration also facilitates automation across the entire integration lifecycle. From automated schema mapping and anomaly detection to intelligent data transformation and validation, these capabilities significantly reduce manual effort and accelerate integration timelines. Moreover, AI-powered systems can continuously learn and improve over time, making them well-suited for iterative M&A processes where integration requirements evolve.

This article aims to explore the architectural strategies and technological foundations required to implement AI-driven data integration in M&A scenarios. It focuses on two key pillars: automating entity resolution and streamlining system consolidation. By examining modern integration architectures, intelligent automation techniques, and conceptual models, the paper provides insights into how organizations can overcome traditional integration bottlenecks and achieve scalable, efficient, and resilient data ecosystems.

## **II. CHALLENGES IN TRADITIONAL M&A DATA INTEGRATION**

Despite significant advancements in enterprise technology, traditional approaches to data integration in mergers and acquisitions (M&A) continue to face critical limitations. These challenges stem from the inherent complexity of combining disparate systems, inconsistent data standards, and evolving business requirements. Understanding these issues is essential to appreciate the need for AI-driven solutions.

### **2.1 Data Heterogeneity and Fragmentation**

One of the foremost challenges in M&A integration is the diversity of data sources. Merging organizations often operate across different technology stacks, including legacy on-premises databases, enterprise resource planning (ERP) systems, customer relationship management (CRM) platforms, and modern cloud-based applications. Each system may use distinct data models, storage formats, and naming conventions.

This heterogeneity leads to:

- Schema mismatches across systems
- Inconsistent data types and formats
- Lack of standardized data definitions

As a result, integrating such fragmented data requires extensive preprocessing, transformation, and normalization efforts, often involving significant manual intervention.

### **2.2 Inefficient Entity Resolution**

Entity resolution is a core component of data integration, yet traditional methods rely heavily on deterministic rules such as exact string matching or predefined thresholds. These approaches fail when dealing with:

- Variations in naming conventions (e.g., abbreviations, misspellings)
- Incomplete or missing data
- Duplicate records across systems

For example, a single customer might appear under slightly different names or identifiers in multiple systems. Rule-based matching may either fail to identify these as the same entity or incorrectly merge distinct entities, leading to data quality issues.

### **2.3 Rigid ETL Pipelines**

Conventional Extract, Transform, Load (ETL) pipelines are typically designed with static rules and predefined workflows. While effective in stable environments, they struggle in M&A scenarios where:

- Data structures frequently change
- New data sources are continuously introduced
- Business rules evolve during integration

This rigidity results in increased maintenance overhead and slower adaptation to changing integration requirements.

### **2.4 High Dependency on Manual Effort**

Traditional integration processes often require significant human involvement for:

- Data mapping and schema alignment
- Data cleansing and validation
- Exception handling and reconciliation

Manual intervention not only increases operational costs but also introduces the risk of human error. Additionally, it limits scalability, especially when dealing with large volumes of data typical in enterprise M&A activities.

### **2.5 Data Quality and Consistency Issues**

Poor data quality is a persistent problem in M&A integration. Common issues include:

- Duplicate and inconsistent records
- Missing or incomplete data fields
- Conflicting information across systems

Without robust mechanisms to detect and resolve these issues, organizations risk making inaccurate business decisions based on unreliable data.

### **2.6 System Redundancy and Integration Complexity**

M&A activities often result in overlapping systems performing similar functions. Deciding which systems to retain, retire, or merge introduces additional complexity. Challenges include:

- Redundant applications and databases
- Incompatible system architectures
- Difficulty in aligning business processes across systems

This leads to prolonged integration timelines and increased costs, delaying the realization of expected synergies.

### **2.7 Compliance and Governance Constraints**

Data integration must also adhere to regulatory and governance requirements, which vary across regions and industries. Challenges include:

- Ensuring data privacy and security
- Maintaining audit trails and data lineage
- Complying with regulations such as GDPR or industry-specific standards

Traditional systems often lack built-in capabilities to enforce governance at scale, making compliance a labor-intensive process.

### **2.8 Limited Scalability and Performance Bottlenecks**

As data volumes grow, traditional integration frameworks struggle to scale efficiently. Batch-oriented processing, limited parallelism, and resource constraints can lead to:

- Slow data processing times
- Delayed integration cycles
- Reduced system performance

This becomes particularly problematic in time-sensitive M&A scenarios where rapid integration is crucial.

### III. AI-DRIVEN DATA INTEGRATION: CONCEPTS AND FOUNDATIONS

The limitations of traditional data integration approaches in M&A scenarios have paved the way for the adoption of Artificial Intelligence (AI) as a transformative enabler. AI-driven data integration introduces intelligence, adaptability, and automation into the integration lifecycle, enabling organizations to handle complex, large-scale, and dynamic data environments more effectively. This section outlines the foundational concepts and core technologies that underpin AI-driven integration strategies.

#### 3.1 Evolution from Rule-Based to Intelligent Integration

Traditional integration relies on static, rule-based systems where data transformations and mappings are explicitly defined. While predictable, these systems lack the flexibility to adapt to changing data patterns or ambiguous relationships.

AI-driven integration shifts this paradigm by:

- Learning patterns from historical and real-time data
- Adapting to variations and anomalies without explicit programming
- Continuously improving through feedback loops

This transition enables more resilient and scalable integration frameworks, particularly suited for M&A environments where uncertainty is high.

#### 3.2 Machine Learning for Entity Resolution

Machine learning (ML) plays a central role in automating entity resolution. Instead of relying solely on exact matches, ML models evaluate the probability that two records represent the same entity based on multiple features such as:

- Name similarity
- Address and contact information
- Behavioral or transactional data

Supervised and unsupervised learning techniques can be applied to:

- Detect duplicates with higher accuracy
- Reduce false positives and false negatives
- Handle incomplete or noisy data

Over time, these models improve by learning from corrections and feedback, making them highly effective in large-scale integration scenarios.

#### 3.3 Natural Language Processing for Schema and Metadata Alignment

Natural Language Processing (NLP) enhances the ability to interpret and align data schemas across systems. In M&A contexts, similar data fields may have different names or formats (e.g., "Cust\_ID" vs. "CustomerNumber").

NLP techniques enable:

- Semantic understanding of field names and metadata
- Automated schema matching and mapping
- Extraction of meaning from unstructured or semi-structured data sources

This reduces the need for manual schema alignment and accelerates the integration process.

#### 3.4 Graph-Based Data Models for Relationship Mapping

Graph-based approaches provide a powerful mechanism for representing and analyzing relationships between data entities. In contrast to traditional tabular models, graph models capture connections such as:

- Customer-to-account relationships
- Supplier networks
- Organizational hierarchies

These models support:

- Context-aware entity resolution
- Detection of complex relationships and dependencies
- Improved accuracy in identifying duplicate or related entities

Graph analytics also enable advanced insights that are difficult to achieve with conventional relational models.

### 3.5 Intelligent Data Transformation and Mapping

AI-driven systems can automate the transformation and mapping of data between source and target systems. By analyzing historical mappings and data patterns, AI can:

- Recommend or auto-generate transformation rules
- Detect anomalies or inconsistencies during transformation
- Adapt mappings dynamically as data evolves

This significantly reduces the time and effort required for designing and maintaining integration pipelines.

### 3.6 Metadata-Driven and Self-Adaptive Pipelines

Modern AI-driven integration platforms leverage metadata to drive automation. Metadata includes information about data structure, lineage, quality, and usage patterns.

Key capabilities include:

- Automated pipeline generation based on metadata
- Dynamic adjustment of workflows based on data changes
- Continuous monitoring and optimization of integration processes

These self-adaptive pipelines enhance flexibility and reduce operational overhead.

### 3.7 Data Quality Enhancement through AI

AI techniques can proactively identify and resolve data quality issues by:

- Detecting duplicates and inconsistencies
- Filling missing values using predictive models
- Standardizing data formats

This ensures that integrated data is accurate, reliable, and ready for downstream analytics and decision-making.

### 3.8 Integration with Modern Data Architectures

AI-driven integration is typically implemented within modern data architectures such as:

- Data lakes and lakehouses
- Cloud-native integration platforms
- Distributed processing frameworks

These architectures provide the scalability and computational power required to support AI models and large-scale data processing.

## IV. AI TECHNIQUES FOR AUTOMATED ENTITY RESOLUTION

Entity resolution is one of the most critical and complex components of M&A data integration. It involves identifying and merging records that refer to the same real-world entity across disparate systems. Inaccurate entity resolution can lead to duplicated customers, inconsistent financial reporting, and flawed analytics. AI-driven techniques significantly enhance the accuracy, scalability, and automation of this process.

### 4.1 Overview of AI-Based Entity Resolution

Unlike traditional deterministic approaches, AI-based entity resolution uses probabilistic models and learning algorithms to assess the likelihood that two or more records represent the same entity. These systems consider multiple attributes simultaneously and adapt to variations in data.

The typical workflow includes:

- Data preprocessing and standardization
- Feature extraction
- Similarity computation
- Classification or clustering
- Feedback and model refinement

### 4.2 Feature Engineering and Similarity Metrics

Feature engineering is a foundational step where raw data attributes are transformed into meaningful representations for model input. Common features include:

- String similarity (e.g., edit distance, phonetic similarity)
- Numeric similarity (e.g., transaction values, IDs)

- Geographic proximity (e.g., address matching)
- Behavioral similarity (e.g., purchase patterns)

AI models combine these features to compute similarity scores between records. Advanced techniques use vector embeddings to represent entities in high-dimensional space, enabling more nuanced comparisons.

#### 4.3 Supervised Learning Approaches

Supervised machine learning models are trained on labeled datasets where pairs of records are marked as "match" or "non-match." Common algorithms include:

- Logistic Regression
- Random Forest
- Gradient Boosting Machines
- Deep Neural Networks

These models learn complex patterns and relationships between features, enabling high-accuracy predictions. However, they require high-quality labeled data, which can be a limitation in some M&A scenarios.

#### 4.4 Unsupervised and Semi-Supervised Methods

In cases where labeled data is limited, unsupervised and semi-supervised approaches are used. These include:

- Clustering algorithms (e.g., hierarchical clustering, DBSCAN)
- Probabilistic models (e.g., Bayesian methods)
- Active learning, where minimal human input is used to iteratively improve the model

These methods are particularly useful during early stages of M&A integration when labeled datasets are not readily available.

#### 4.5 Deep Learning and Embedding Techniques

Deep learning models enhance entity resolution by capturing semantic and contextual relationships within data. Techniques include:

- Word and sentence embeddings for textual data
- Autoencoders for dimensionality reduction
- Siamese networks for similarity learning

These models are effective in handling unstructured data and complex matching scenarios, such as identifying entities across multilingual or inconsistent datasets.

#### 4.6 Graph-Based Entity Resolution

Graph-based approaches represent entities as nodes and relationships as edges. This allows the system to:

- Identify indirect relationships between entities
- Detect communities or clusters of related records
- Improve matching accuracy using contextual information

For example, two customer records with similar names and shared contact details connected to the same account can be confidently matched using graph analytics.

#### 4.7 Human-in-the-Loop and Feedback Mechanisms

Despite automation, human expertise remains valuable in refining entity resolution models. AI systems incorporate:

- Feedback loops for correcting mismatches
- Confidence scoring to flag uncertain matches
- Interactive dashboards for validation

This hybrid approach ensures both accuracy and continuous improvement of the models.

#### 4.8 Scalability and Performance Optimization

AI-driven entity resolution systems are designed to scale across large datasets using:

- Distributed computing frameworks
- Blocking and indexing techniques to reduce comparison space
- Parallel processing for faster computation

These optimizations enable real-time or near real-time entity matching in large enterprise environments.

#### 4.9 Conceptual Diagram: AI-Based Entity Resolution Pipeline

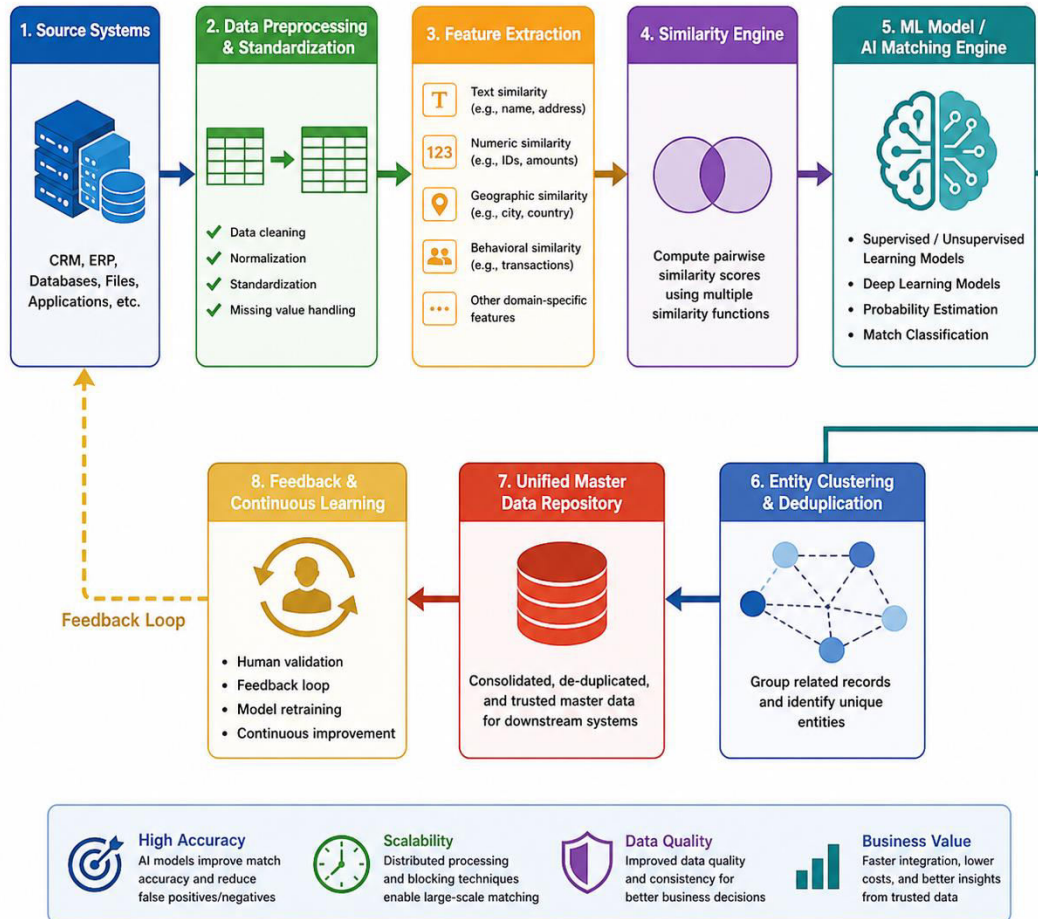


Fig. 1: AI-Based Entity Resolution Pipeline

### V. AI-DRIVEN SYSTEM CONSOLIDATION STRATEGIES

While entity resolution focuses on identifying and unifying data records, system consolidation addresses the broader challenge of integrating, rationalizing, and modernizing the underlying applications and data platforms in M&A scenarios. AI-driven approaches play a crucial role in simplifying this complex process by enabling intelligent decision-making, automation, and adaptive system integration.

#### 5.1 Overview of System Consolidation in M&A

System consolidation involves evaluating and merging overlapping IT systems such as:

- Enterprise Resource Planning (ERP) systems
- Customer Relationship Management (CRM) platforms
- Data warehouses and operational databases
- Legacy applications and custom-built solutions

The primary objectives include:

- Eliminating redundancy
- Reducing operational costs
- Creating a unified data and application ecosystem

However, achieving these goals requires careful alignment of data models, business processes, and system architectures.

### **5.2 AI-Assisted Application Rationalization**

One of the first steps in system consolidation is determining which applications to retain, replace, or retire. AI can assist in this process by:

- Analyzing system usage patterns and dependencies
- Evaluating performance metrics and operational costs
- Identifying redundant or underutilized systems

Machine learning models can recommend optimal consolidation strategies based on historical data and business priorities, reducing reliance on subjective decision-making.

### **5.3 Intelligent Schema Mapping and Transformation**

AI enhances schema mapping by automatically identifying relationships between source and target data structures. Key capabilities include:

- Semantic matching of fields using NLP
- Automated transformation rule generation
- Detection of inconsistencies and anomalies

This reduces manual effort and accelerates the migration of data across systems, especially when dealing with complex and evolving schemas.

### **5.4 Automated Data Migration and Integration Pipelines**

AI-driven integration platforms enable the creation of intelligent data pipelines that:

- Adapt to changes in source systems
- Optimize data flow and transformation logic
- Monitor and resolve errors in real time

These pipelines leverage metadata and learning algorithms to continuously improve performance and reliability during migration and consolidation.

### **5.5 Legacy System Modernization with AI**

Legacy systems often pose a major barrier to consolidation due to outdated technologies and limited interoperability. AI can facilitate modernization by:

- Reverse-engineering legacy schemas and code
- Identifying reusable components and services
- Enabling API-based integration with modern platforms

This allows organizations to gradually transition from legacy environments to cloud-native architectures without disrupting business operations.

### **5.6 Process Mining and Workflow Alignment**

Merging organizations often have different business processes embedded within their systems. AI-powered process mining tools analyze event logs to:

- Discover existing workflows
- Identify inefficiencies and bottlenecks
- Recommend optimized, standardized processes

This ensures that system consolidation is aligned with business process integration, leading to improved operational efficiency.

### **5.7 Risk Mitigation and Decision Intelligence**

AI-driven analytics provide insights that help mitigate risks during system consolidation, such as:

- Predicting potential integration failures
- Identifying data inconsistencies before migration
- Assessing the impact of system changes on business operations

These insights enable proactive decision-making and reduce the likelihood of costly errors.

### 5.8 Hybrid Integration Architectures

In many M&A scenarios, a complete system replacement is not immediately feasible. AI supports hybrid integration strategies where:

- Legacy and modern systems coexist
- APIs and microservices enable interoperability
- Data virtualization provides a unified view across systems

AI optimizes data routing, transformation, and synchronization in such hybrid environments, ensuring seamless integration.

### 5.9 Conceptual Diagram: AI-Driven System Consolidation

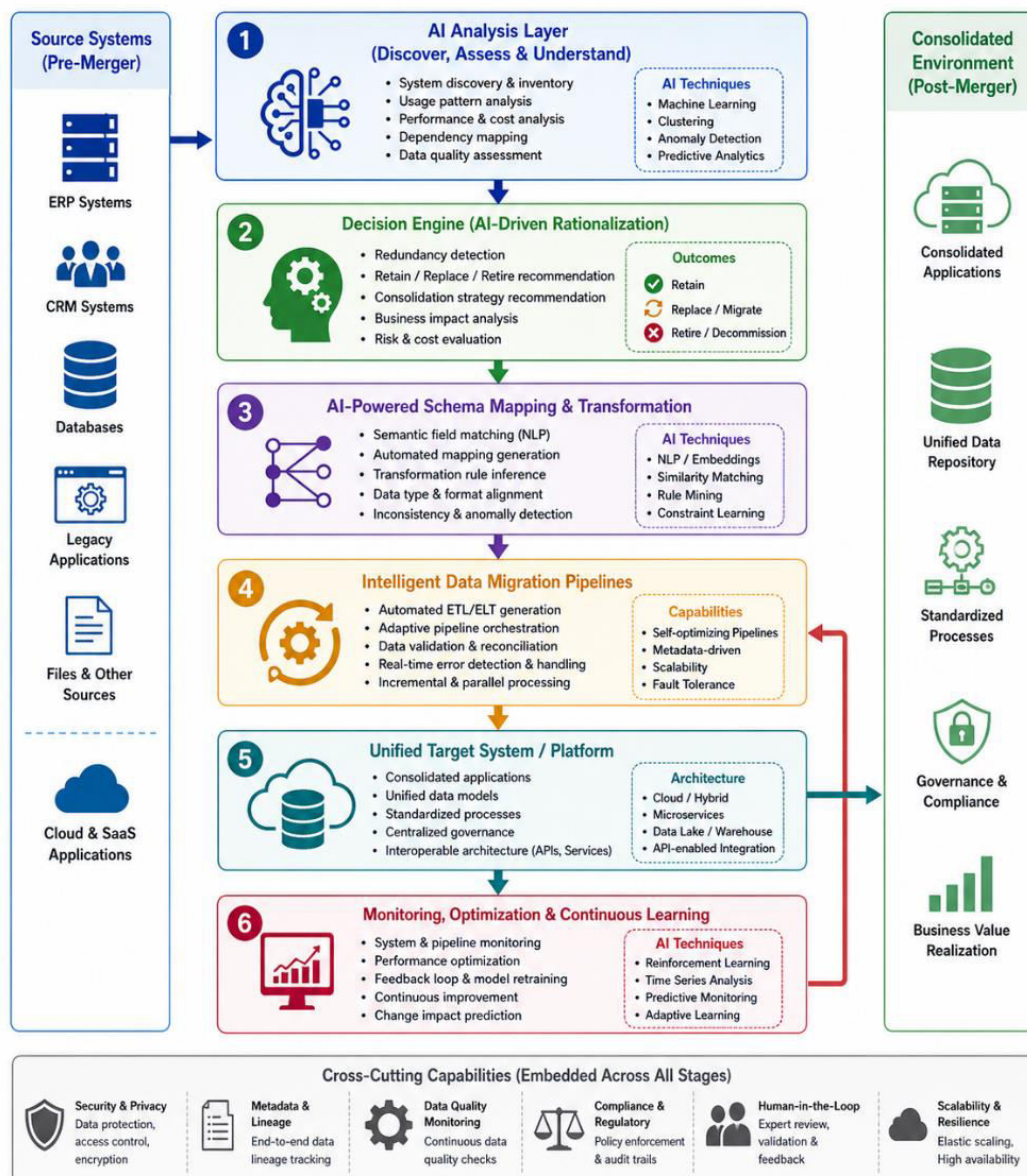


Fig. 2: AI-Driven System Consolidation

## VI. REFERENCE ARCHITECTURE FOR AI-DRIVEN M&A DATA INTEGRATION

A well-defined reference architecture is essential for successfully implementing AI-driven data integration in M&A scenarios. It provides a structured framework that integrates data ingestion, intelligent processing, and unified data delivery while ensuring scalability, governance, and resilience. This section presents a layered architecture that aligns with modern enterprise integration practices.

### 6.1 Architectural Overview

The proposed architecture follows a multi-layered design, where each layer plays a distinct role in the integration process. Key architectural layers include:

- Data Source Layer
- Data Ingestion Layer
- AI Processing Layer
- Integration & Transformation Layer
- Unified Data Layer
- Governance & Security Layer
- Consumption Layer

### 6.2 Data Source Layer

This layer consists of all source systems involved in the M&A process, including:

- Legacy ERP and CRM systems
- Operational databases
- Cloud and SaaS applications
- External data sources (partners, third-party providers)

These systems often differ in structure, format, and technology, making them the primary source of data heterogeneity.

### 6.3 Data Ingestion Layer

The ingestion layer is responsible for collecting and transporting data from source systems into the integration platform.

Key capabilities:

- Batch and real-time data ingestion
- API-based data extraction
- Change Data Capture (CDC) for incremental updates
- Data streaming for near real-time processing

AI can optimize ingestion by identifying optimal data extraction strategies and detecting anomalies in incoming data streams.

### 6.4 AI Processing Layer

This is the core intelligence layer where AI models are applied to automate and enhance integration tasks.

Core components:

- Entity resolution engine (ML-based matching)
- NLP-based schema and metadata alignment
- Anomaly detection and data quality models
- Recommendation systems for mapping and transformation

This layer continuously learns from data and feedback, improving accuracy over time.

### 6.5 Integration & Transformation Layer

This layer handles data mapping, transformation, and consolidation.

Key functions:

- Automated schema mapping using AI
- Data transformation and normalization
- Deduplication and entity merging
- Workflow orchestration

AI-driven pipelines in this layer are dynamic and adaptive, enabling seamless integration across evolving data sources.

### 6.6 Unified Data Layer

The unified data layer serves as the centralized repository for consolidated and trusted data.

Possible implementations:

- Data lake or lakehouse
- Enterprise data warehouse
- Master Data Management (MDM) system

This layer ensures:

- Single source of truth
- High data quality and consistency
- Support for analytics and reporting

### 6.7 Governance and Security Layer

Governance is critical in M&A integration to ensure compliance and data integrity.

Key features:

- Data lineage and traceability
- Access control and encryption
- Compliance with regulatory standards
- Audit logging and monitoring

AI enhances governance by automating policy enforcement and detecting potential compliance risks.

### 6.8 Consumption Layer

This layer provides access to integrated data for business and analytical use cases.

Consumers include:

- Business intelligence and reporting tools
- Advanced analytics and AI models
- Operational applications
- APIs and data services

This enables organizations to derive actionable insights and operational value from integrated data.

### 6.9 Cross-Cutting Capabilities

Across all layers, the architecture incorporates:

- Scalability: Cloud-native and distributed processing
- Resilience: Fault tolerance and high availability
- Metadata management: Centralized metadata repository
- Monitoring and observability: Real-time performance tracking

## VII. IMPLEMENTATION CONSIDERATIONS AND BEST PRACTICES

Designing an AI-driven data integration framework for M&A is only part of the journey—the real challenge lies in successful implementation. Organizations must carefully balance technology, data, governance, and operational factors to ensure that AI-driven integration delivers measurable value. This section outlines key considerations and best practices for implementing such solutions effectively.

### 7.1 Data Readiness and Assessment

Before implementing AI models, organizations must evaluate the quality and readiness of their data.

Key considerations:

- Assess data completeness, consistency, and accuracy
- Identify duplicate, missing, or inconsistent records
- Standardize formats and naming conventions
- Establish baseline data quality metrics

AI models are only as good as the data they learn from, so investing in data preparation is critical for success.

### 7.2 Choosing the Right AI Models

Selecting appropriate AI techniques depends on the nature of the data and integration requirements.

Best practices:

- Use supervised learning when labeled data is available
- Apply unsupervised or semi-supervised methods for unknown datasets
- Combine multiple techniques (ensemble models) for higher accuracy
- Continuously evaluate model performance using metrics such as precision, recall, and F1-score

A hybrid approach often yields the best results in complex M&A environments.

### 7.3 Human-in-the-Loop Integration

Despite automation, human expertise remains essential for validation and governance.

Implementation strategies:

- Introduce approval workflows for low-confidence matches
- Provide user interfaces for manual review and correction
- Incorporate feedback loops to retrain models

This ensures a balance between automation efficiency and decision accuracy.

### 7.4 Scalable and Cloud-Native Infrastructure

AI-driven integration requires scalable infrastructure to handle large data volumes.

Recommendations:

- Adopt cloud platforms for elasticity and scalability
- Use distributed processing frameworks for large-scale data handling
- Implement microservices architecture for modularity

Cloud-native environments enable faster deployment and better resource utilization.

### 7.5 Metadata and Data Lineage Management

Metadata plays a crucial role in enabling intelligent automation and governance.

Best practices:

- Maintain a centralized metadata repository
- Track data lineage across integration pipelines
- Use metadata to drive automated schema mapping and transformations

This improves transparency, traceability, and compliance.

### 7.6 Governance, Security, and Compliance

M&A integration often involves sensitive and regulated data, making governance essential.

Key measures:

- Implement role-based access control (RBAC)
- Ensure encryption for data at rest and in transit
- Maintain audit trails for all integration activities
- Align with regulatory requirements (e.g., GDPR, industry standards)

AI can also assist in detecting anomalies and enforcing compliance policies.

### 7.7 Incremental and Phased Integration Approach

Attempting a full-scale integration at once can be risky and complex.

Recommended approach:

- Start with high-priority data domains (e.g., customer, finance)
- Implement pilot projects to validate AI models
- Gradually expand integration scope
- Continuously monitor and optimize

This reduces risk and allows iterative improvements.

**7.8 Monitoring, Evaluation, and Continuous Improvement**

AI systems require ongoing monitoring to maintain performance.

Key practices:

- Track model accuracy and data quality metrics
- Monitor pipeline performance and latency
- Detect and address model drift
- Retrain models periodically with new data

Continuous improvement ensures long-term effectiveness of the integration framework.

**7.9 Change Management and Organizational Alignment**

Technology alone cannot ensure success—organizational readiness is equally important.

Considerations:

- Train teams on AI-driven integration tools and processes
- Align IT and business stakeholders
- Establish clear roles and responsibilities
- Communicate benefits and expectations effectively

Strong change management helps drive adoption and minimize resistance.

**7.10 Cost Optimization and ROI Measurement**

Organizations must evaluate the financial impact of AI-driven integration.

Key metrics:

- Reduction in manual effort and operational costs
- Faster integration timelines (faster time-to-value)
- Improvement in data quality and decision-making
- System consolidation cost savings

Tracking ROI helps justify investments and guide future initiatives.

**VIII. USE CASES AND INDUSTRY APPLICATIONS**

AI-driven data integration in M&A is not just a theoretical advancement—it has practical, high-impact applications across multiple industries. By automating entity resolution and system consolidation, organizations can accelerate integration timelines, improve data accuracy, and unlock business value more efficiently. This section highlights key use cases and industry-specific applications.

**8.1 Financial Services: Customer 360 and Risk Consolidation**

In banking and financial institutions, M&A often results in fragmented customer data across multiple systems.

Key applications:

- AI-driven entity resolution to create a unified Customer 360 view
- Consolidation of risk and compliance data across systems
- Fraud detection using unified transaction histories

Benefits:

- Improved customer insights and personalization
- Enhanced regulatory compliance
- Reduced financial risk through better visibility

**8.2 Healthcare: Patient Data Integration**

Healthcare organizations face significant challenges in merging patient records during acquisitions.

Applications:

- Matching patient records across hospitals and clinics using AI
- Integrating Electronic Health Records (EHR) systems
- Ensuring data consistency across clinical and administrative systems

Benefits:

- Improved patient care through unified medical histories
- Reduction in duplicate records and medical errors
- Enhanced interoperability across healthcare systems

**8.3 Retail and E-Commerce: Product and Customer Integration**

Retail mergers require consolidation of product catalogs and customer databases.

Applications:

- AI-based product matching across different catalog systems
- Customer deduplication and segmentation
- Integration of supply chain and inventory systems

Benefits:

- Accurate inventory and pricing strategies
- Personalized marketing and customer engagement
- Streamlined supply chain operations

**8.4 Telecommunications: Subscriber and Network Integration**

Telecom companies frequently undergo mergers to expand coverage and services.

Applications:

- Subscriber identity resolution across billing and CRM systems
- Consolidation of network management systems
- Integration of usage and billing data

Benefits:

- Unified subscriber view
- Improved billing accuracy
- Enhanced service delivery and customer experience

**8.5 Manufacturing: Supplier and Asset Consolidation**

Manufacturing firms need to integrate supplier networks and operational systems.

Applications:

- Supplier deduplication and master data consolidation
- Integration of ERP and supply chain systems
- Asset tracking across merged entities

Benefits:

- Improved procurement efficiency
- Better supply chain visibility
- Reduced operational redundancies

**8.6 Technology Sector: SaaS Platform Integration**

Technology companies often acquire startups or smaller platforms.

Applications:

- Integration of user accounts and subscription data
- Consolidation of application backends and APIs
- Harmonization of analytics and logging systems

Benefits:

- Seamless user experience across platforms
- Faster product integration and innovation
- Unified analytics for decision-making

**8.7 Cross-Industry Use Case: Master Data Management (MDM)**

Across all industries, Master Data Management is a critical application of AI-driven integration.

Applications:

- Creating a single source of truth for core entities (customers, products, vendors)
- Maintaining consistent and accurate master data
- Synchronizing data across systems

Benefits:

- Improved data governance
- Enhanced reporting and analytics
- Reduced duplication and inconsistencies

**8.8 Comparative Table: Traditional vs AI-Driven Integration**

Aspect	Traditional Integration	AI-Driven Integration
Entity Resolution	Rule-based, manual	ML-based, automated
Schema Mapping	Static, manual	Dynamic, AI-assisted
Data Quality	Reactive	Proactive and predictive
Scalability	Limited	Highly scalable
Integration Speed	Slow	Accelerated
Adaptability	Low	High

**8.9 Business Impact Overview**

AI-driven integration in M&A delivers measurable business outcomes:

- Faster realization of merger synergies
- Reduction in integration costs and timelines
- Improved decision-making through high-quality data
- Enhanced customer and operational insights

**IX. CONCLUSION**

AI-driven data integration is rapidly emerging as a foundational capability for successful mergers and acquisitions (M&A) in the digital era. Traditional integration approaches—characterized by manual processes, rigid ETL pipelines, and rule-based matching—are no longer sufficient to address the scale, complexity, and heterogeneity of modern enterprise data ecosystems. As organizations increasingly rely on data as a strategic asset, the need for intelligent, automated, and scalable integration solutions has become critical.

This article demonstrated how Artificial Intelligence (AI) transforms two key pillars of M&A integration: entity resolution and system consolidation. By leveraging machine learning, natural language processing, and graph-based techniques, organizations can achieve highly accurate entity matching, reduce duplication, and improve data quality. Similarly, AI-driven system consolidation enables intelligent application rationalization, automated schema mapping, and adaptive data migration, significantly reducing integration timelines and operational costs.

The proposed reference architecture and implementation strategies highlight how AI can be embedded across the entire integration lifecycle—from data ingestion and processing to governance and consumption. Furthermore, real-world use cases across industries such as finance, healthcare, retail, and telecommunications demonstrate the tangible business value of AI-driven integration, including improved decision-making, enhanced customer insights, and faster realization of merger synergies.

Recent research also reinforces the growing importance of AI in M&A and data integration. Studies show that AI-powered integration frameworks improve automation, governance, and scalability in complex data environments, while emerging approaches such as data fabrics and data meshes provide flexible architectures for modern data ecosystems. Additionally, AI capabilities are increasingly influencing M&A strategies themselves, enabling organizations to better leverage data assets and achieve superior post-merger outcomes.

In conclusion, AI-driven data integration is not merely a technological enhancement but a strategic necessity. Organizations that adopt intelligent integration frameworks can significantly reduce risk, accelerate time-to-value, and unlock the full potential of their M&A initiatives. As AI technologies continue to evolve, future integration platforms are expected to become even more autonomous, adaptive, and context-aware—paving the way for truly intelligent enterprise ecosystems.

**REFERENCES**

- [1] T. Schulz, M. Weinreuter, and D. Augenstein, "Artificial Intelligence in Data Integration: A Comprehensive Framework and Tool Evaluation," in Proc. Hawaii International Conference on System Sciences (HICSS), 2025.
- [2] M. R. Panda, C. Devi, and T. Dhanorkar, "Generative AI-Driven Simulation for Post-Merger Banking Data Integration," *Journal of Artificial Intelligence General Science*, vol. 7, no. 1, pp. 339-350, 2024.
- [3] P. R. Vanga, "AI-Powered Data Integration in Multi-Cloud Environments: Bridging the Gap with Intelligent Automation," *International Journal of Scientific Research in Computer Science Engineering and IT*, 2025.
- [4] S. N. Kumar, "Evolving iPaaS to Autonomous Integration with Generative AI," *International Journal of Computer Trends and Technology*, vol. 73, no. 3, 2025.
- [5] A. Giess and A. Hutterer, "The Future of Data Management: Data Platforms, Data Spaces, Data Meshes, and Data Fabrics," *Information Systems and e-Business Management*, 2025.
- [6] M. V. Denisov, "Data Management Algorithm in Cross-Border Mergers and Acquisitions Based on End-to-End Technologies," *Economic and Information Sciences Journal*, 2025.
- [7] Y. Fang, V. K. Goyal, Y. He, and Z. Zhang, "When AI Acquires Data: Strategic Complementarities in M&A," SSRN Working Paper, 2025.
- [8] P. K. Perugu, "AI-Driven Solutions for Data Governance in Multi-Cloud Ecosystems," SSRN/IJBMV, 2024.
- [9] H. Zhang, Y. Pu, S. Zheng, and L. Li, "AI-Driven M&A Target Selection and Synergy Prediction: A Machine Learning-Based Approach," *World Journal of Innovation and Modern Technology*, 2024.
- [10] N. Maslej et al., "Artificial Intelligence Index Report," Stanford Institute for Human-Centered AI, 2024.



INTERNATIONAL  
STANDARD  
SERIAL  
NUMBER  
INDIA



# INTERNATIONAL JOURNAL OF INNOVATIVE RESEARCH

IN SCIENCE | ENGINEERING | TECHNOLOGY

 9940 572 462  6381 907 438  [ijirset@gmail.com](mailto:ijirset@gmail.com)



[www.ijirset.com](http://www.ijirset.com)

Scan to save the contact details